

SCENE 12: A PARK

(#35 – WHEN I GROW UP *begins.*)

WHEN I GROW UP

Swung 2




When I grow up —

5




I will be tall e - nough to reach

8



— the bran - ches That I need to reach

10



— to climb — The trees — you get — to climb



— when you're grown up.



And when I grow up—



I will be smart e - nough to ans - wer all— the



quest - ions that you need— to know— the ans - wers to be -



fore you're grown up.——





And when I grow up— I will eat



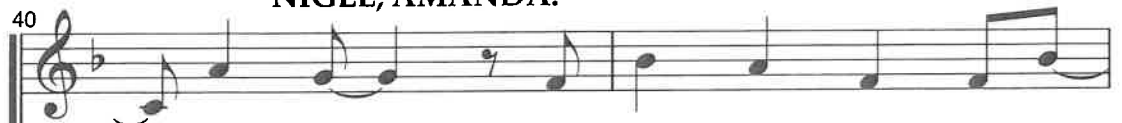
— sweets ev-'ry day,— on the way— to work— and I—

32 
— will go to bed — late ev - 'ry night. —


35 
And I will wake up — when the sun


37 
— comes up and I — will watch car - toons un - til my eyes

**ALICE, ERIC, LAVENDER,
NIGEL, AMANDA:**

40 
— go square And I won't care cos I'll —

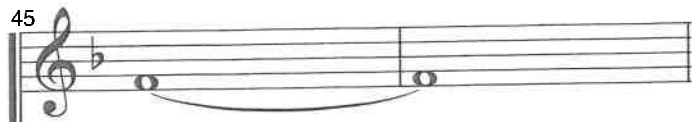
**HORTENSIA,
TOMMY, BRUCE:**


And I won't care cos I'll —

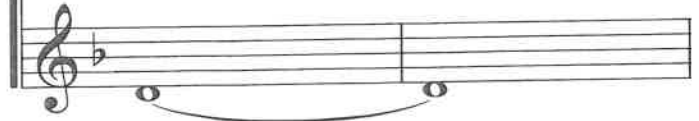
42 
— be all — grown up — When I — grow


— be all — grown up — When I — grow

45



up. _____



up. _____